

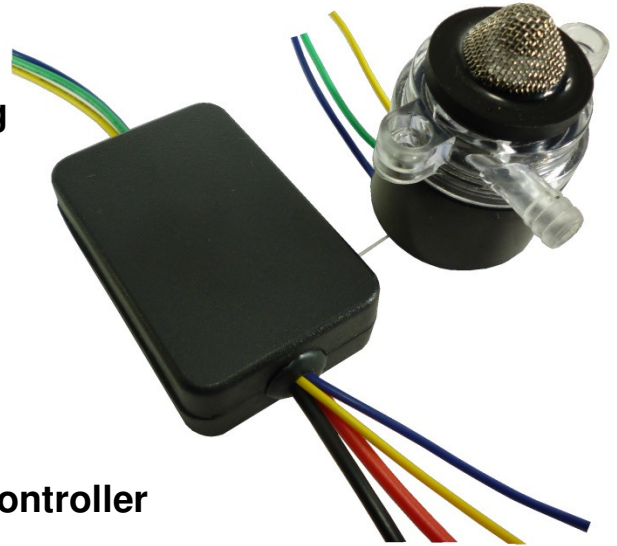
data sheet

model DM212VSA

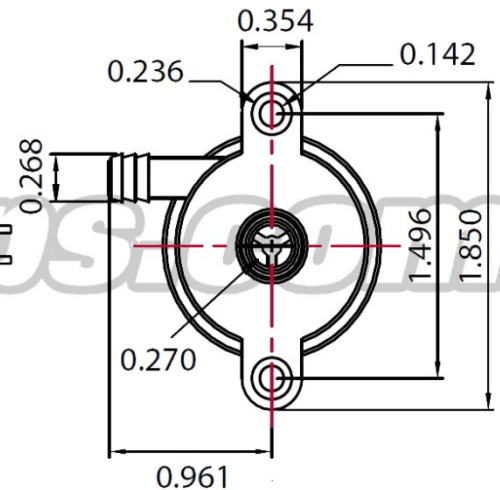
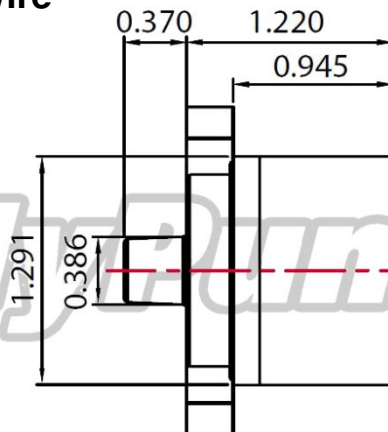
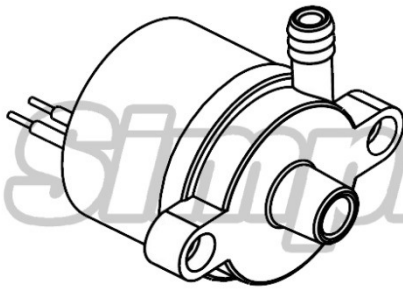
DYNAMAX pump series™

Features

- Brushless motor external controller
- Variable speed flow using 5 VDC analog
- Quiet and extremely durable
- Arduino compatible
- 20,000 hour life expectancy
- Magnetically coupled impeller
- Can be submersed or used in-line
- Removable screen for in-line use
- Specifications can be customized
- Long life ceramic impeller shaft
- 36" 24 AWG leads between pump and controller
- Speed RPM feedback wire



Dimensions



Specifications

- 12 VDC - 0.5 amps – 6.0 watt
- Flow Rate: 37 GPH or 2.4 l/min
- 0.375" inlet tubing, inlet ID 0.270", OD 0.375"
- 0.250" outlet tubing, outlet ID 0.170", OD 0.268"
- Weight pump: 1.9 ounces controller: 2.0 ounces
- Controller dimensions: 2.187 x 1.375 x 0.625 inches
- 22 AWG power leads 10 inches long
- Blue wire: 0 to 5 VDC analog input
- Yellow wire: speed RPM feedback if needed
- Blue and red wire share common ground



PO BOX 677 Manor PA 15665 724 864 5959

Specifications are subject to change without notice. No liability or warranty implied by this information. Copyright © 2017 Simply Pumps
Revised 1/21/17 R1