

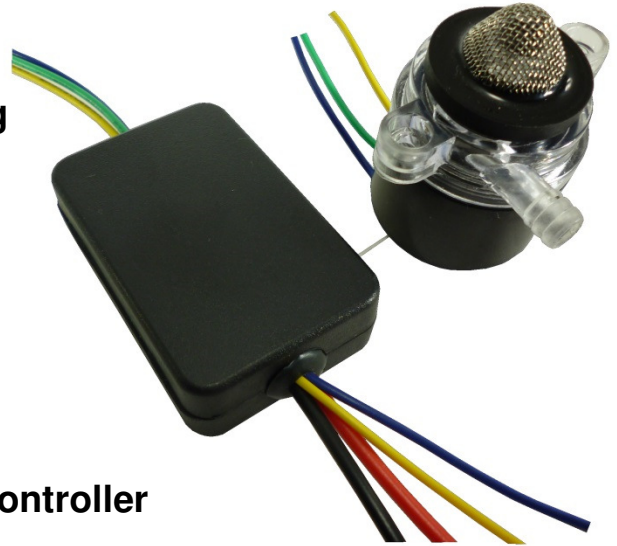
data sheet

model DM212VSA

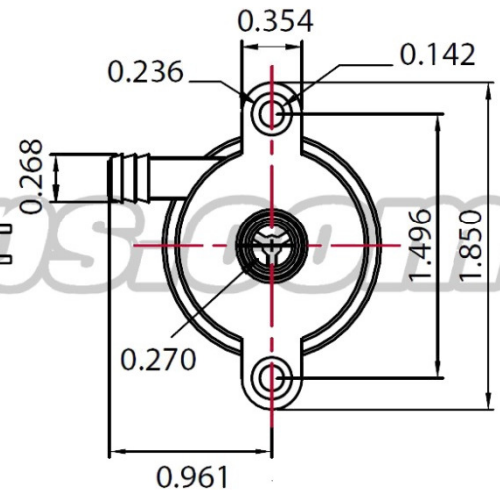
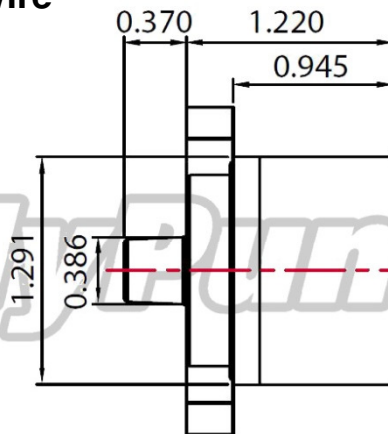
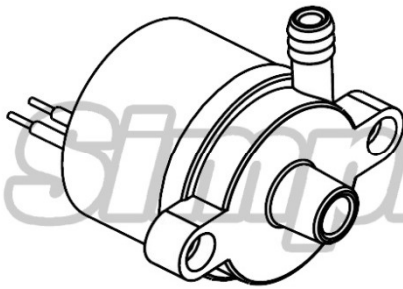
DYNAMax pump series™

Features

- Brushless motor external controller
- Variable speed flow using 5 VDC analog
- Quiet and extremely durable
- Arduino compatible
- 20,000 hour life expectancy
- Magnetically coupled impeller
- Can be submersed or used in-line
- Removable screen for in-line use
- Specifications can be customized
- Long life ceramic impeller shaft
- 36" 24 AWG leads between pump and controller
- Speed RPM feedback wire



Dimensions



Specifications

- 12 VDC - 0.5 amps – 6.0 watt
- Flow Rate: 37 GPH or 2.4 l/min
- 0.375" inlet tubing, inlet ID 0.270", OD 0.375"
- 0.250" outlet tubing, outlet ID 0.170", OD 0.268"
- Weight pump: 1.9 ounces controller: 2.0 ounces
- Controller dimensions: 2.187 x 1.375 x 0.625 inches
- 22 AWG power leads 10 inches long
- Blue wire: 0 to 5 VDC analog input
- Yellow wire: speed RPM feedback if needed
- Blue and red wire share common ground



SimplyPumps.com™

724-864-5959